

2026

P4 Parent Engagement

Friday, 16th January 2026



Zhangde Primary School
2026

Learning School •



Photography and Videography Publication of Students' Work

- We would like to inform you that photographs/ videos of students/ parents taken at all school events by the official school photographers may be published on the school's official media platforms (e.g. school website & Instagram) and used for briefings, workshops and other educational purposes.
- The school may publish photographs, videos and students' work/ achievements together with the names of the students from time to time.
- Please notify the school in writing if you do not wish to grant such permission.



Zhangde Primary School
2026

Learning School •

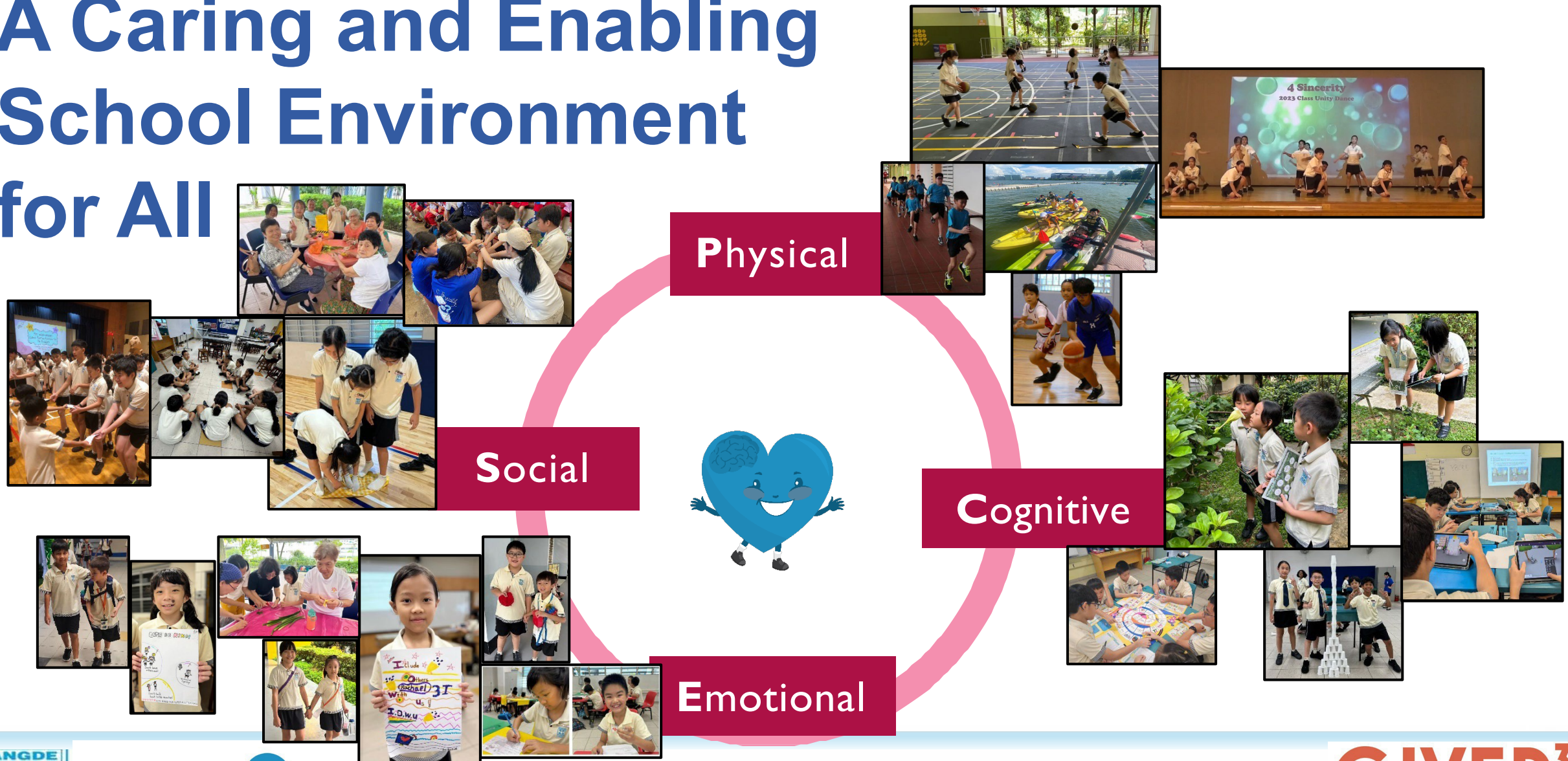


Creating a Caring and Enabling School Environment for All

Holistic Well-Being &
Student Management Matters



A Caring and Enabling School Environment for All



Zhangde Primary School

2026

Learning School ●

GIVER'S heart



Our Approach to Discipline

- Knowing myself and my actions
- What did I do?
 - What should I have done?

The **ABC Approach** is a 3-step method recommended for all students

Awareness



Choice

Behaviour

Making the right decisions

- How do I ensure I continue to do the right thing?
- How might I help influence my friends to do good too?

Building relationships with others around me

- How do my actions affect others?
- Is my behaviour a positive one?

ABC Approach	Strategy
Awareness (A)	Be aware of how your action/behaviour may contribute to the incident.
Behaviour (B)	Understand how your action/behaviour impacts their relationships with others.
Choice (C)	Make right choices based on your GIVER ³ S Heart.

Summary of Offences and Corresponding Consequences on page 17 of Student Handbook.



What our students would like their parents to know

"We see you as our **trusted adult** - someone we can turn to for **emotional support and advice**."



"We need **space** to **handle everyday conflicts ourselves** - it helps us build problem-solving skills."

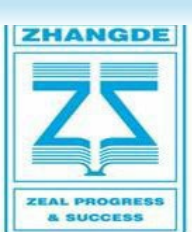
"We want you to **partner** our teachers, working together with them to tackle concerns effectively."

"We value your **guidance**, but we'd like you to **step in directly only when things get really serious**."

P4 Subject Based Banding (SBB)

P4 Subject Based Banding (SBB) - MOE

- Every child is unique, and has different aptitudes, capabilities and talents. Our schools believe in providing a balanced education that caters to the different abilities of each child so that we can prepare him for life.
- **Standard subjects** – in Primary schools, the focus is on the mastery of core content and skills.
- **Foundation subjects** – pitched at a lower level than Standard Subjects to build up their understanding in subjects they need more help with.



Zhangde Primary School
2026

Learning School •



Zhangde Primary School

Subject Combinations offered

1	English Language, Mathematics, Mother Tongue Language and Science [4S]
2	Higher Mother Tongue Language, English Language, Mathematics, Mother Tongue Language and Science [4S1H]
3	English Language, Mother Tongue Language, Science and Foundation Mathematics [3S1F(FMA)]
4	Foundation English Language, Foundation Mathematics, Foundation Mother Tongue Language and Foundation Science [4F]

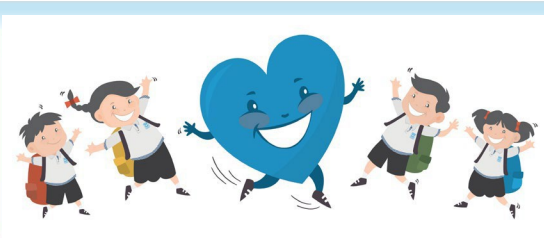
Higher Mother Tongue Programme

- Built on existing MTL curriculum:
- Sustain students' interest and deepen their knowledge in their MTL
- Enhance Reading and Writing skills as well as higher order thinking
- Expose students to age-appropriate literary texts



Offering of Higher Mother Tongue (HMTL) at P5/P6 level

- Students who showed strong proficiency and interest in Mother Tongue Language (MTL) will be offered HMT at P5.
- The offering of HMTL at P6 is a school-based decision based on the students' P5 year end results.
- Students who obtained Distinction/Merit/Pass in **HCL** and a PSLE Score of 14 or better (i.e. PSLE Score ≤ 14) at PSLE will be eligible for **posting advantage** to SAP schools.



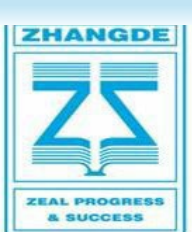
Zhangde Primary School
2026

Learning School •



SBB and Secondary School Admission

- ❖ Progression to secondary school depends on your child's PSLE AL score.
- ❖ Different expectations of Standard and Foundation subjects will be taken into consideration when your child's PSLE AL score is calculated.
- ❖ Offering subjects at the foundation level is not a disadvantage to your child. Your child will be able to focus on building up strong fundamentals in those subjects.
- ❖ If he/she excels in the subject, he/she will have the opportunity to pursue higher level options at the secondary school.



Zhangde Primary School
2026

Learning School •



Subject-based Banding (SBB)

You can refer to the website for more details.

<https://www.moe.gov.sg/primary/curriculum/subject-based-banding>

Catering to Your Child's Abilities

SUBJECT-BASED BANDING

FOR PRIMARY SCHOOLS

Every child is unique, and has different aptitudes, capabilities and talents. Our schools believe in providing a balanced education that caters to the different abilities of each child so that we can prepare him for life.

Subject-based banding (SBB) was introduced as a refinement to the streaming process to help each child realise his potential, based on his strengths and needs.

WHAT IS SUBJECT-BASED BANDING (SBB)?

Subject-based banding (SBB) provides greater flexibility for your child by offering him the option of a combination of standard and foundation subjects, depending on his strengths. For example, if he excels in English and Mother Tongue but needs more support in Mathematics and Science, he may choose to take the first two subjects at the standard level and the others at the foundation level.

Such a choice will allow your child to focus on and stretch his potential in the subjects that he is strong in while building up the fundamentals in the subjects that he needs more support in.

SUBJECT-BASED BANDING (SBB) AND SECONDARY SCHOOL ADMISSION: HOW ARE THEY RELATED?

Progression to secondary level depends on your child's PSLE score. The different expectations of standard and foundation subjects will be taken into account when your child's PSLE score is calculated. If he excels in his subjects, he will have the opportunity to pursue higher-level options at secondary school.

Offering subjects at the foundation level is not a disadvantage to your child. It enables him to focus on building up strong fundamentals in these subjects and better prepares him for progression to secondary school.

WHAT ARE SOME CHOICES AVAILABLE?

If your child (for P4 exam)	Your child may be recommended to take
Passes all 4 subjects and performs very well in Mother Tongue Language	4 standard subjects + Higher Mother Tongue Language
Passes all 4 subjects	4 standard subjects
Passes 3 subjects	4 standard subjects
Passes 2 subjects or less	4 standard subjects; or 3 standard subjects + 1 other foundation subject; or 2 standard subjects + 2 other foundation subjects; or 1 standard subject + 3 other foundation subjects; or 4 foundation subjects

HOW DOES SUBJECT-BASED BANDING (SBB) WORK?

@ PRIMARY 4

Student sits for school-based examinations.

School recommends a subject combination based on the student's results.

Parents fill up an option form indicating the preferred combination.

@ PRIMARY 5

Student takes subject combination chosen by parents.

English Language, Mathematics, Science and Mother Tongue Language are available at standard and foundation levels.

Higher Mother Tongue Language is also available.

School assesses student's ability to cope with the current subject combination at the end of the year. Adjustments to the number of standard and foundation subjects can be made, if necessary.

@ PRIMARY 6

Student takes subject combination decided by his school and sits for the Primary School Leaving Examination (PSLE) at the end of Primary 6.

WE ARE ALWAYS HERE TO HELP

Schools will help recommend subject combinations, based on your child's needs and abilities.

If you have any questions on Subject-based Banding (SBB), you should approach your child's school for help.

www.moe.gov.sg/education/primary/subject-based-banding/primary/

www.facebook.com/moesingsgapore

contact@moe.gov.sg

6872 2220



Ministry of Education
Singapore

The information in this brochure is correct as of December 2017.
Produced by Communications and Engagement Group, MOE



Zhangde Primary School
2026

Learning School •

GIVER'S
heart

Your child may be experiencing

- **Some stress and anxiety** from the Weighted Assessment (WA), and End-of-Year Examination (EYE)
- **Concerns** about meeting one's own expectations and those of others (e.g. peers, parents, and teachers)
- **Disappointment** from receiving results that do not match invested efforts and expectations

Tips on how you can support your child

- Know your child's strengths, interests, weaknesses – guide and support
- Nurture your child – recognise and praise
- Help your child – monitor and guide, not enforce
- Keep in touch with Form and Subject teachers