

# P5 Parent Engagement 2026

Friday, 23<sup>rd</sup> January



Zhangde Primary School  
2026

*Learning School* •





# Photography and Videography Publication of Students' Work

- We would like to inform you that photographs/ videos of students/ parents taken at all school events by the official school photographers may be published on the school's official media platforms (e.g. school website & Instagram) and used for briefings, workshops and other educational purposes.
- The school may publish photographs, videos and students' work/ achievements together with the names of the students from time to time.
- Please notify the school in writing if you do not wish to grant such permission.



Zhangde Primary School  
2026

*Learning School* •





# Creating a Caring and Enabling School Environment for All

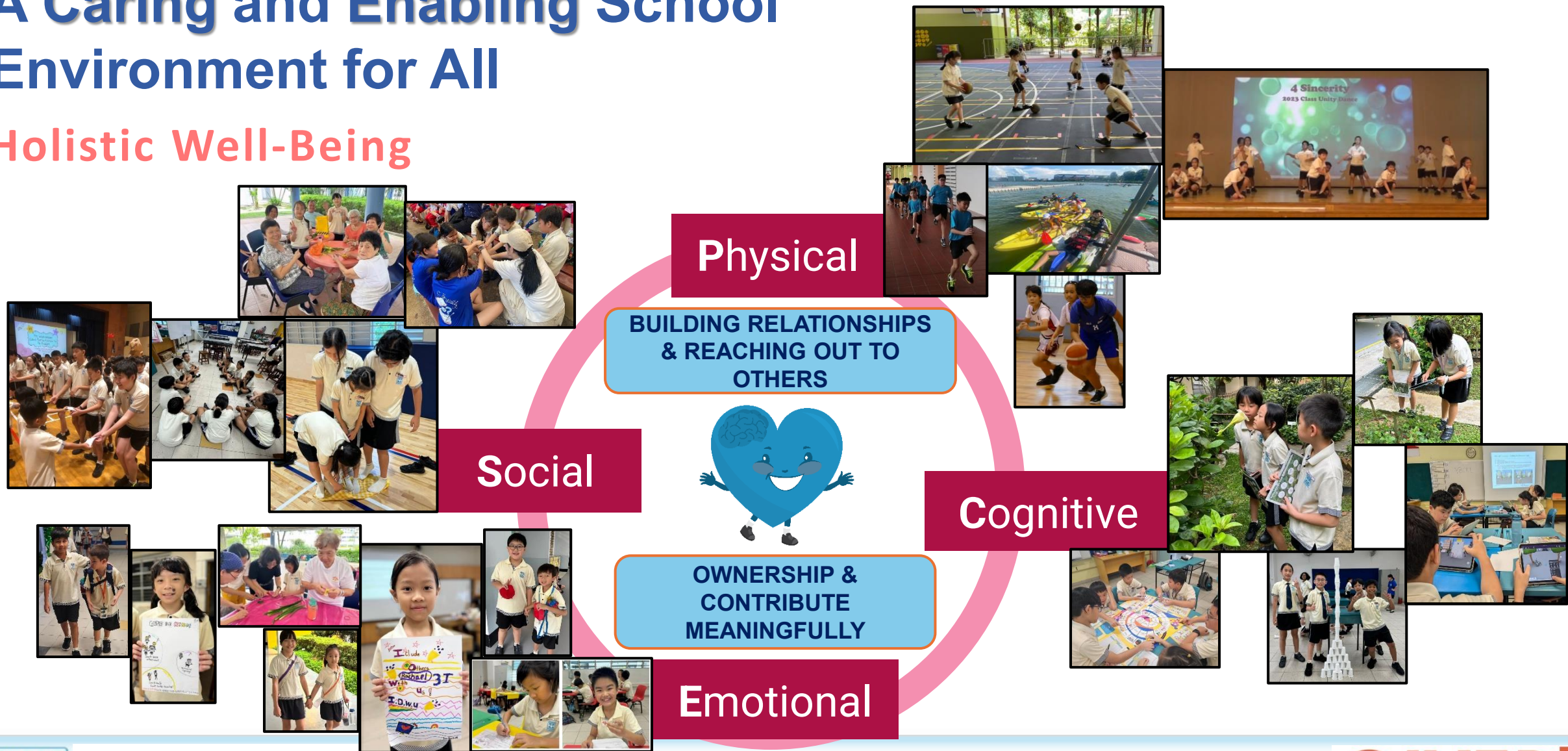
Holistic Well-Being &  
Student Management Matters





# A Caring and Enabling School Environment for All

## Holistic Well-Being





# Holistic Well-Being of Our Students

## Managing Thoughts, Feelings & Behaviour

- Developing healthy coping strategies for stress
- Embracing new learning opportunities
- Managing expectations

## Strengthening Sense of Self & Purpose

- Building strong sense of identity during developmental changes

## Building Healthy Habits to Maintain Well-being and Safety

- Learning how good habits contribute to personal growth and well-being



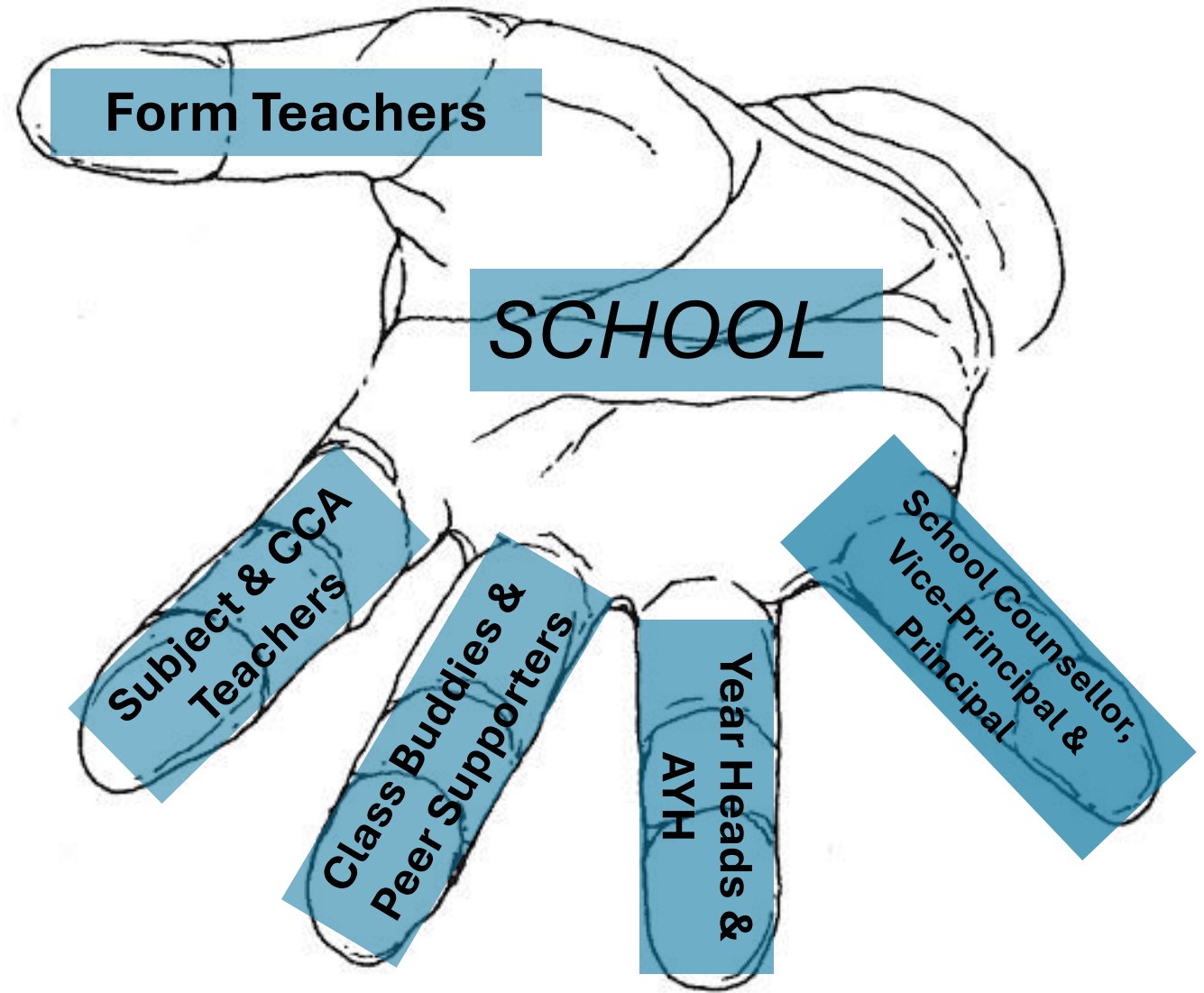
Zhangde Primary School  
2026

*Learning School* •





# Our System of Support



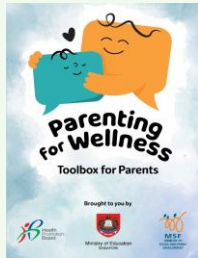
*Zhangde's Helping Hand*



# Your Role in Family Support

## How can you support your child?

**LOOK** out for these signs which indicate your child may need help to cope:



Scan the QR Code to read more about stress vs distress in the Parenting for Wellness toolbox. The full toolbox is available at the end of the presentation.



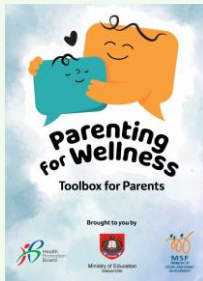
**ARE YOU FEELING TOO MUCH STRESS?**

**We can LOOK out for:**

- L**oss of interest in hobbies
- O**verly tired, sad, worried or upset
- O**ften posting moody messages or talking about hurting yourself
- K**eeping away from people you are usually close to, or being quieter than usual



If you observe that your child may be struggling or showing signs of needing more support, you may use **C.H.E.E.R** to guide your conversations and support your child.



Scan the QR Code to read an example in the Parenting for Wellness toolkit, of how CHEER can be used. The full toolbox is available at the end of the presentation.



**C**alm them down



**H**ear them out



**E**mpathise with their feelings



**E**ncourage them to seek help



**R**eassure them

Source: Parenting For Wellness Toolkit



# Our Approach to Discipline

- Knowing myself and my actions
- What did I do?
  - What should I have done?

The **A.B.C. Approach** is a 3-step method recommended for all students

**Awareness**

Making the right decisions

- How do I ensure I continue to do the right thing?
- How might I help influence my friends to do good too?



**Choice**

**Behaviour**

Building relationships with others around me

- How do my actions affect others?
- Is my behaviour a positive one?

ABC Approach	Strategy
Awareness (A)	Be aware of how your action/behaviour may contribute to the incident.
Behaviour (B)	Understand how your action/behaviour impacts their relationships with others.
Choice (C)	Make right choices based on your GIVER <sup>3</sup> S Heart.

**\*Summary of Offences & Corresponding Consequences on page 17 of Student Handbook**





## What our students would like their parents to know

"We see you as our **trusted adult** - someone we can turn to for **emotional support and advice**."



"We need **space** to **handle everyday conflicts ourselves** - it helps us build problem-solving skills."

"We want you to **partner** our teachers, working together with them to tackle concerns effectively."

"We value your **guidance**, but we'd like you to **step in directly only when things get really serious**."





# Direct School Admission

More information:

<https://www.moe.gov.sg/secondary/dsa>



Zhangde Primary School  
2026

*Learning School* ❤️





# DIRECT SCHOOL ADMISSION

# What is DSA-Sec?

Direct School Admission for secondary schools (DSA-Sec) allows students to apply to some schools before taking the PSLE.

Students apply based on their talent in **sports, CCAs** and **specific academic areas**.



# Zhangde Primary School

## 2026

# Learning School





# DIRECT SCHOOL ADMISSION

At Primary 6, students can apply for DSA-Sec based on a wide-range of talents, including:

- Sports and games
- Visual, literary and performing arts
- Debate and public speaking
- Science, mathematics and engineering
- Languages and humanities
- Uniformed groups
- Leadership (for example, prefects)



# Eligibility

- Represented the school in a CCA.
- Held a role in a play or performance.
- Done well in a subject such as mathematics or creative writing.
- Held a leadership role in class or a CCA.



Zhangde Primary School  
2026

*Learning School* •





# DIRECT SCHOOL ADMISSION

- **DSA is a commitment on the part of both the student and the secondary school.**
- Students successfully allocated to their DSA-Sec schools will **NOT be allowed to participate in the annual S1 Posting to opt for secondary schools**, and are expected to honour the commitment to the allocated DSA-Sec school for the entire duration of the programme to develop their talents.
- They will also **NOT be allowed to transfer to another school** after the release of the PSLE results.



# Zhangde Primary School

## 2026

# Learning School





# DIRECT SCHOOL ADMISSION – Key Dates in 2027

**Jan – May:** Explore School Choices

**Early May – Early June:** Application

**Early September:** Attend interview, auditions, or trial

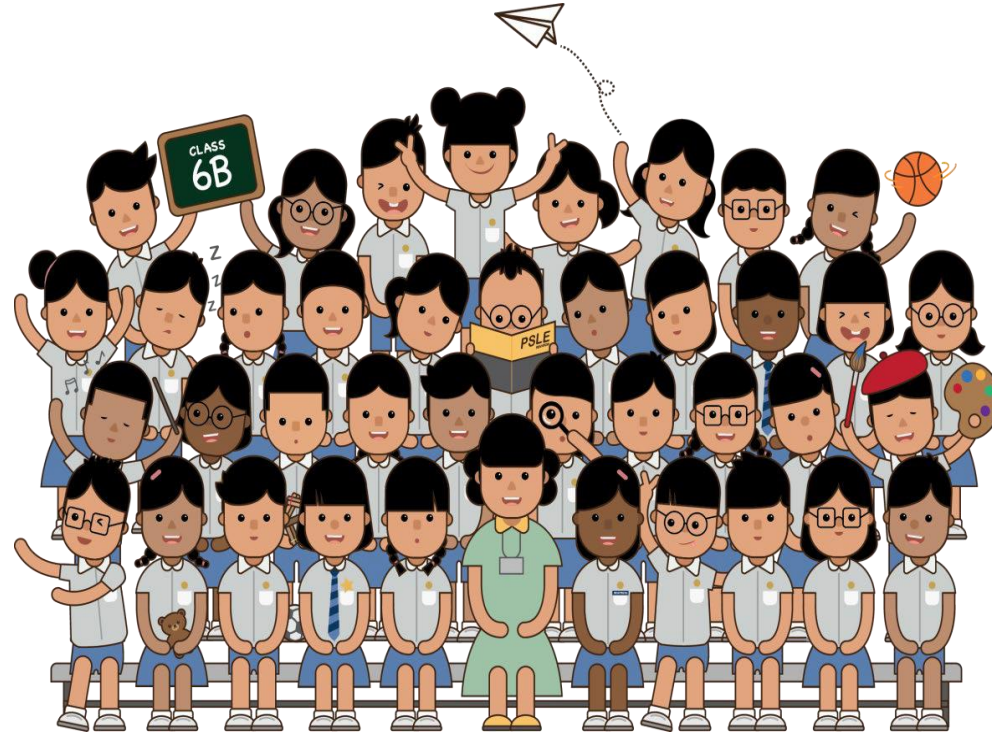
**End October:** Select preferred school

**November:** Receive school allocation results

**\*More information will be shared via PG in 2027**



# PSLE Scoring & S1 Posting





# Student Movement: Subject-Based



End of P4	End of P5	Start of P6
<ul style="list-style-type: none"> <li>Overall marks based on whole year assessments.</li> <li>School recommends a subject combination based on the students' results.</li> <li>Parents fill up the option form indicating either.</li> </ul> <p>A) 4 Standard or</p> <p>B) Given Subject Combination by the school.</p> <p>NOTE: Parents cannot choose to do a Foundation Subject if they are not offered this.</p>	<ul style="list-style-type: none"> <li>Students study the subjects based on the combination given at the end of P4.</li> <li>School assesses students' ability to cope with the current subject combination.</li> <li><b>Final decision</b> on Standard or Foundation Subjects will be decided based on students' overall results for the year.</li> <li><b>No parental consent required.</b></li> </ul>	<ul style="list-style-type: none"> <li>Students study the subjects based on the combination given at the end of P5.</li> <li>Registration for PSLE will be in March 2026.</li> </ul>



Zhangde Primary School  
2026

*Learning School* ♥



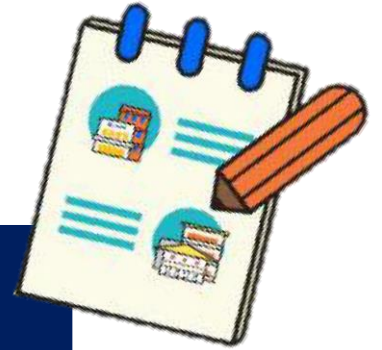


# What Is the Intent of PSLE?



**A useful checkpoint at the end of primary school**

**A fair way to determine secondary school posting**



Over the years, we have been changing the education system to help our students discover and develop their strengths, interests, abilities and talents, while moving away from an over-emphasis on academic results. Our PSLE Scoring system reduces the over-emphasis on academic results by:

**1** Reducing fine differentiation of students' examination results at a young age.

**2** Recognising a student's level of achievement, regardless of how his/her peers have done.

**3** Encouraging families to choose secondary schools holistically based on students' strengths, interests, abilities, talents and learning needs.



**Zhangde Primary School  
2026**

*Learning School* ♥





# How The PSLE Scoring Works





# Achievement Level leading to AL Scores



## Reflects a student's individual level of achievement

- Students' ALs for each subject reflect their level of achievement.
- AL Score** (or PSLE Score) is the total of these individual ALs, ranging from 4 (least) to 32 (most).

AL	RAW MARK RANGE
1	$\geq 90$
2	85 – 89
3	80 – 84
4	75 – 79
5	65 – 74
6	45 – 64
7	20 – 44
8	$< 20$



Zhangde Primary School  
2026

Learning School 





# Foundation Subject Grades

- Foundation subject grades are graded in scoring bands from **AL A to C**.
- To derive a student's overall PSLE Score for S1 Posting, ALA to AL C for Foundation level subjects are **mapped to AL 6 to AL 8 of Standard level subjects respectively**.
- This mapping is based on the learning and assessment load of the subjects and informs students of how ready they are for the curriculum in secondary school.

FOUNDATION LEVEL AL	FOUNDATION RAW MARK RANGE	EQUIVALENT STANDARD LEVEL AL
A	75 – 100	6
B	30 – 74	7
C	< 30	8





- There is no passing or failing mark.

A student must have scored **at least an AL 7** in English Language and Mathematics to be able to progress to Secondary Schools under Posting Group 1.

Students who do not qualify for Posting Groups 1, 2 or 3 would have to repeat the PSLE, or progress to a specialised school such as Northlight School or Assumption Pathway School.

AL	RAW MARK RANGE
1	$\geq 90$
2	85 – 89
3	80 – 84
4	75 – 79
5	65 – 74
6	45 – 64
7	20 – 44
8	$< 20$



# Learning School

# GIVER'S heart



# Eligibility Criteria For Higher Mother Tongue Language



- The eligibility criteria for taking HMTL ensures that students can cope with the higher academic load.

## ELIGIBILITY CRITERIA FOR HMTL

- (i) An overall PSLE Score of 8 or better
- or
- (ii) An overall PSLE Score of 9 to 14 (inclusive); and attain
  - AL 1 / AL 2 in MTL or
  - Distinction / Merit in HMTL

- For students who do not meet the above criteria, secondary schools will have the flexibility to offer HMTL to students if they are assessed to have high ability and interest in MTL, and are able to cope with the learning load required.



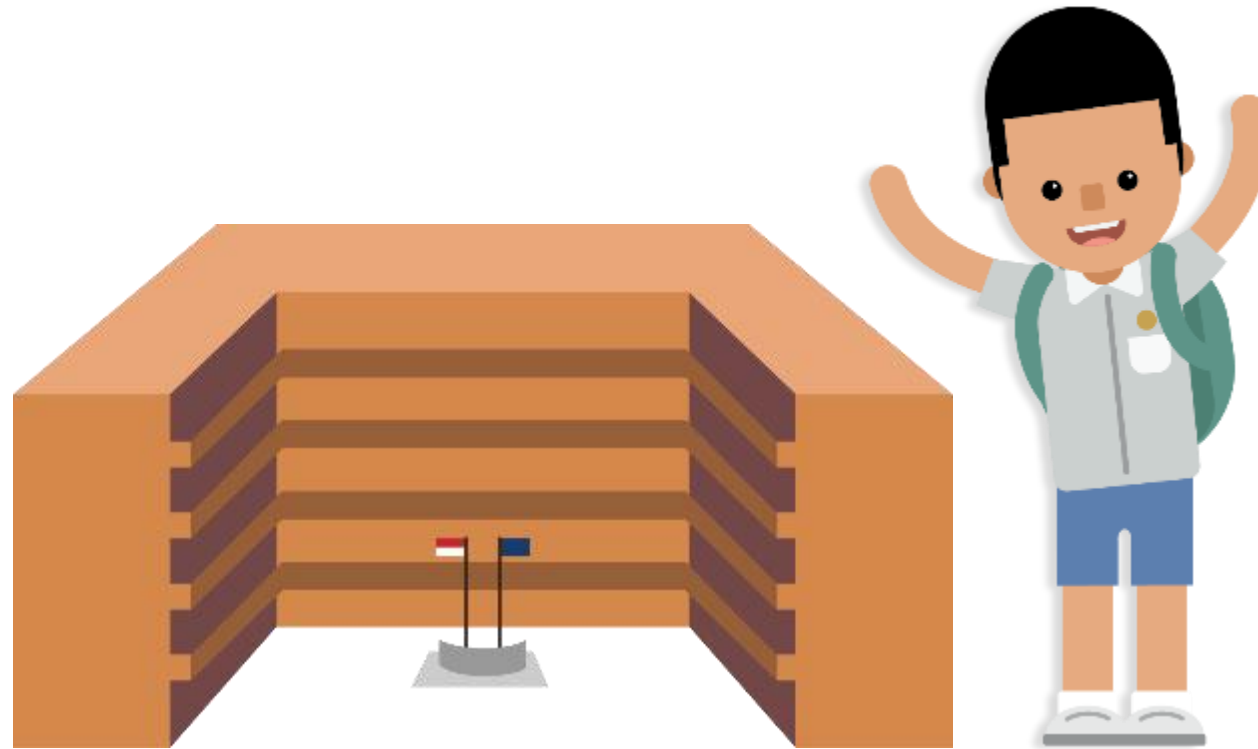
Zhangde Primary School  
2026

*Learning School* ❤️






# How The S1 Posting Works





# Choice Order Of Schools Matters

- Students have **six choices** in selecting their secondary schools
  - Students are posted to a secondary school based on **academic merit, i.e., PSLE Score**, and their **choice order of schools**.
  - If two or more students with the same PSLE Score vie for the last remaining place(s) in a school, the following tie-breakers are used in the following order:
    1. **CITIZENSHIP**
    2. **CHOICE ORDER OF SCHOOLS**
    3. **COMPUTERISED BALLOTING**
  - The tie-breaker based on school choice order recognises the different considerations that families have in making school choices.
- 





# Tie-breakers

## in the new S1 Posting System

Tie-breakers are used only if there is more than one student with the same PSLE Score vying for the last available place(s) in a school. Here's a simplified example.

5 students are vying for the last places in the schools of their choice.

**Jane**  
Singapore Citizen  
16 pts

SCHOOL CHOICES:  
1) Sch A  
2) Sch ...  
3) Sch ...  
4) Sch ...

**Bryan**  
Singapore Citizen  
20 pts

SCHOOL CHOICES:  
1) Sch B  
2) Sch ...  
3) Sch ...  
4) Sch ...

**Mary**  
Singapore Citizen  
20 pts

SCHOOL CHOICES:  
1) Sch A  
2) Sch B  
3) Sch C  
4) Sch ...

**Alan**  
Permanent Resident  
20 pts

SCHOOL CHOICES:  
1) Sch A  
2) Sch B  
3) Sch D  
4) Sch ...

**Rina**  
Permanent Resident  
20 pts

SCHOOL CHOICES:  
1) Sch A  
2) Sch B  
3) Sch D  
4) Sch E

➤ Students with better scores will be posted first

Jane has a better PSLE score. She will be posted first, to **School A**.

Bryan, Mary, Alan and Rina have the same score.

As Jane has taken the last available place in School A, Bryan, Mary, Alan and Rina will vie for the last available place in their next choice, **School B**.

➤ Tie-breaker #1: Citizenship

Bryan and Mary are Singapore Citizens. They will have priority to enter **School B**.

Alan and Rina will be tie-broken out as they are Permanent Residents. They will be considered for their next choice, **School D**.

➤ Tie-breaker #2: Choice order of schools

Because Bryan ranked School B higher than Mary, he will be posted to **School B**.

Since Bryan has taken the last place in School B, Mary will be posted to **School C**.

Alan and Rina have both ranked School D as their third choice. They will go through computerised balloting to vie for the last remaining place in **School D**.

➤ Tie-breaker #3: Computerised balloting

Through computerised balloting, Alan is posted to **School D**.

Since Alan has taken the last place in School D, Rina will be posted to her fourth choice, **School E**.



# S1 Posting under Full SBB

MOE will facilitate the admission of P6 students into S1 through 3 Posting Groups:  
**Posting Group 1, 2 and 3.**

Objective: Schools to admit a **diverse profile of students** and students have **access to a wide range of schools.**

**Posting Groups will only be used for the purposes of facilitating entry into secondary school and to guide the subject levels students offer at the start of S1.**

- PSLE Scores provide a good gauge of the subject levels that students can offer at the beginning of S1.

PSLE Score	Posting Group	Subject level for most subjects
4 – 20	3	G3
21 and 22	2 or 3	G2 or G3
23 and 24	2	G2
25	1 or 2	G1 or G2
26 – 30 (with AL 7 in EL and MA)	1	G1



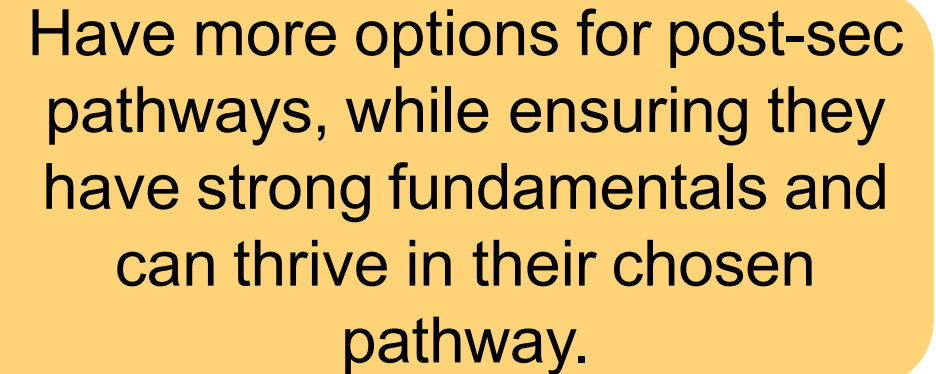
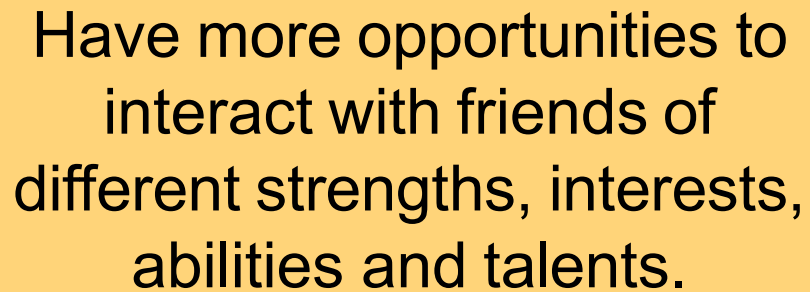
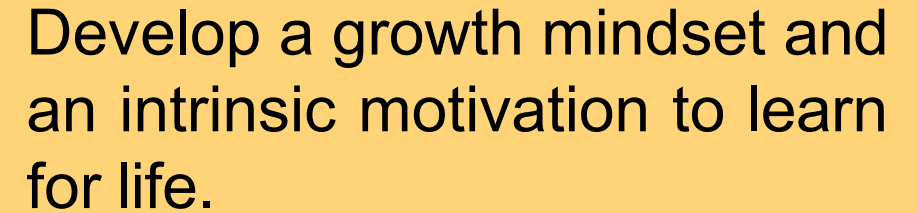
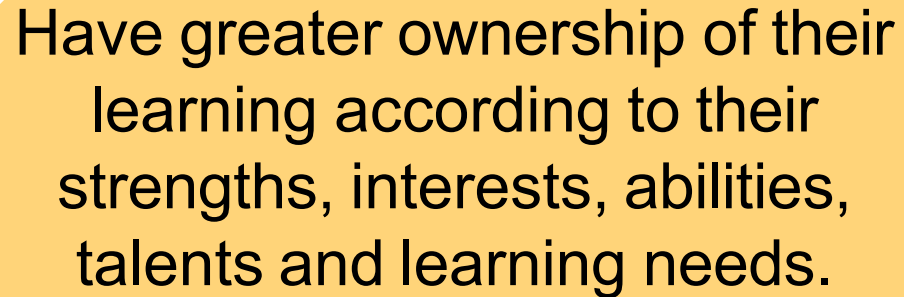
Zhangde Primary School  
2026

*Learning School* •





- Full SBB has been implemented in secondary schools from 2024,
- and aims for students to:





# PSLE Score Ranges For Individual Secondary Schools





# PSLE Score Ranges For Secondary Schools

- Use the PSLE Score ranges as a reference alongside other important factors, such as the school's distinctive programmes, Co-Curricular Activities (CCA), culture, ethos, and proximity to home when shortlisting school choices that would best fit a student's educational needs.
- The latest PSLE Score ranges for individual secondary schools will be available on <https://moe.gov.sg/schoolfinder> and <https://go.gov.sg/exploreschools>. They reflect the PSLE scores of the student posted into these schools at the previous year's S1 Posting Exercise.
- A school's PSLE Score range (including Cut-Off-Point) for a particular year is not pre-determined before the posting, and vary from year to year, depending on the cohort's PSLE results and their school choices in that year's S1 Posting Exercise.

**SchoolFinder Tool**



**MySkillsFuture Student Portal (Primary)**



**Zhangde Primary School  
2026**

*Learning School •*





# PSLE Score Ranges For Individual Secondary Schools

The PSLE Score range refers to the PSLE Score of the first and last student admitted to a particular school in the previous year via the S1 Posting Exercise. This shows the range of student profiles who enter each school.

## Example

XX Secondary School

PSLE Score range of previous year's S1 Posting Exercise

Posting Group 3	15	20
Posting Group 2	21	24
Posting Group 1	25	28

PSLE Score of the first student posted into the school in the respective PG.

PSLE Score of the last student posted into the school in the respective PG [i.e., the school's Cut-Off Point (COP)].









# HCL Posting Advantage To SAP Schools



Students who obtained a Distinction/Merit/Pass for HCL at the PSLE and an overall PSLE Score of 14 or better will receive a posting advantage when applying to SAP schools.

Students will be considered for admission to SAP schools in the following order:

1st		7	NO HCL	Students with better PSLE Scores will be posted first, even if they did not take HCL
2nd		8	DISTINCTION	
3rd		8	MERIT	Amongst students with the same PSLE Score, those with better HCL grades will be posted first
4th		8	PASS	
5th		8	NO HCL	
6th		9	DISTINCTION	

- Students' HCL results are denoted as 'D' (Distinction), 'M' (Merit) or 'P' (Pass).
- Students who obtain a Distinction / Merit / Pass in HCL and a PSLE Score of 14 or better are eligible for posting advantage to SAP schools.
- Students are ranked taking into account their performance in HCL.
- This posting advantage applies before the tie-breakers for S1 Posting.





# An Example of an SAP School's PSLE Score Range

While students need not take HCL to enter SAP schools, students who pass HCL receive a posting advantage for admission. To reflect this, the PSLE Score ranges of SAP schools include the HCL grades of the first and last student admitted in the previous year via S1 Posting.

*Note: Posting Groups will be assigned based on PSLE Scores, mapped from existing PSLE Score ranges for Express, N(A) and N(T) streams.*

## Example

XX Secondary School

PSLE Score range of previous year's S1 Posting Exercise

Posting Group 3	5 (D) — 12 (P)
Posting Group 2	
Posting Group 1	

PSLE Score and HCL grade of the first student posted into the school through PG3

PSLE Score and HCL grade of the last student posted into the school through PG3 [i.e. the school's Cut-Off Point (COP)]



# SCORING FOR :-

Students with MTL - Exemption

Students taking an Asian Language/Foreign Language (Asl/FL) in lieu of an MTL





# Scoring for MTL-EXEMPT and AsL/FL STUDENTS



- For students who are exempted from MTL or take an AsL/FL in lieu of an official MTL, their PSLE result slip will only reflect the three subjects they have taken.
- However, for the purposes of Secondary 1 posting, these students will need an assigned MTL score so that they have a PSLE score comprising four subjects
  - To determine the assigned MTL score, reference is made to MTL scores of other students who have achieved similar scores in English, Mathematics, and Science, including those taking Foundation MTL.



Zhangde Primary School  
2026

*Learning School* ❤️





# SCORING FOR MTL-EXEMPT AND AsL/FL STUDENTS



- Take reference from peers with similar scores for English, Mathematics, and Science.
- Maintain parity of treatment with students who take Foundation MTL (who will score between AL 6 to 8)
- Hence, students will receive an assigned MTL score between AL 6 to 8 in PSLE.



Zhangde Primary School  
2026

*Learning School* ♥





# School Choice Journey

When making school choices in order to find a school that would help the student learn and thrive best, advise parents to consider:

“Every child is unique and has different strengths, interests, abilities, talents and learning needs. Beyond academic results, what are other factors we should consider?”



The student's needs



What the schools can offer



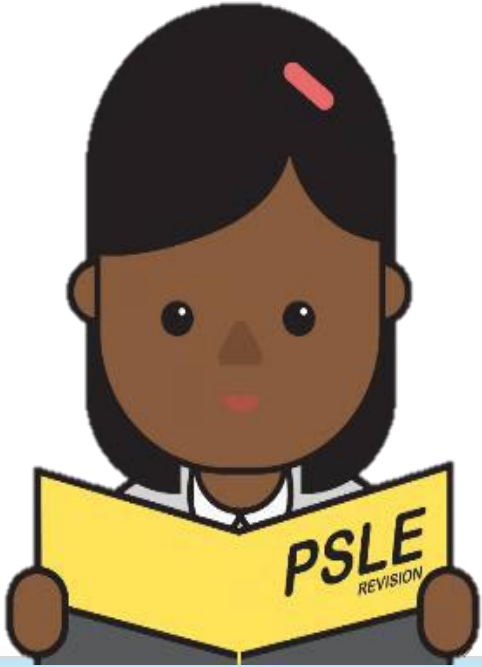
# School Choice Journey



## THE STUDENT'S NEEDS

Consider the student's strengths, interests, abilities, talents and learning needs

- Encourage parents to discuss the options with their child, with the following considerations:
  - Programmes, subjects and CCAs offered: Can the school support and develop their child's strengths, interest, abilities and talents?
  - School culture: What is the school's culture and ethos?
  - Location and transport options: Is it too far from home? How will their child get to school?
  - Support for Special Educational Needs: Does the school have specialised facilities or resources to support their child, if required?



Zhangde Primary School  
2026

*Learning School* ❤️





# School Choice Journey

## Parent's Involvement



- **Shortlist schools** that offer programmes that cater to the student's strengths, interests, abilities, talents and learning needs, as well as provide suitable learning environments
- **Refer to SchoolFinder** in MOE's website and **MySkillsFuture Student Portal (Primary) for information** on the schools' location, school type, CCAs, programmes and subjects they offer to shortlist schools that meet their child's learning needs.
- Parents may also refer to the **secondary schools' websites** and visit their **Open Houses**.



Zhangde Primary School  
2026

*Learning School* •





# Advising Students And Their Parents: Preparing For The S1 Posting Exercise

- **Use all 6 options with a range of Cut-off Points**
  - This increases the student's chances of being posted to a school of their choice.
- **Take reference from schools' PSLE Score ranges**
  - This serves as a guide for students and parents to shortlist school choices.
  - Consider at least 2-3 schools where the student's PSLE Score is better than the school's Cut-off Point.
- **Shortlist schools that offer programmes that cater to the student's strengths, interests, abilities, talents and learning needs, as well as provide suitable learning environments**
  - Refer to SchoolFinder in MOE's website and MySkillsFuture Student Portal (Primary) to find out more about what schools offer.
  - Parents may also refer to the secondary schools' websites and visit their open houses.
- **Rank the student's preferred school higher in his/her choice order of schools**
  - This increases the student's chances of being posted to that school, if they need to undergo



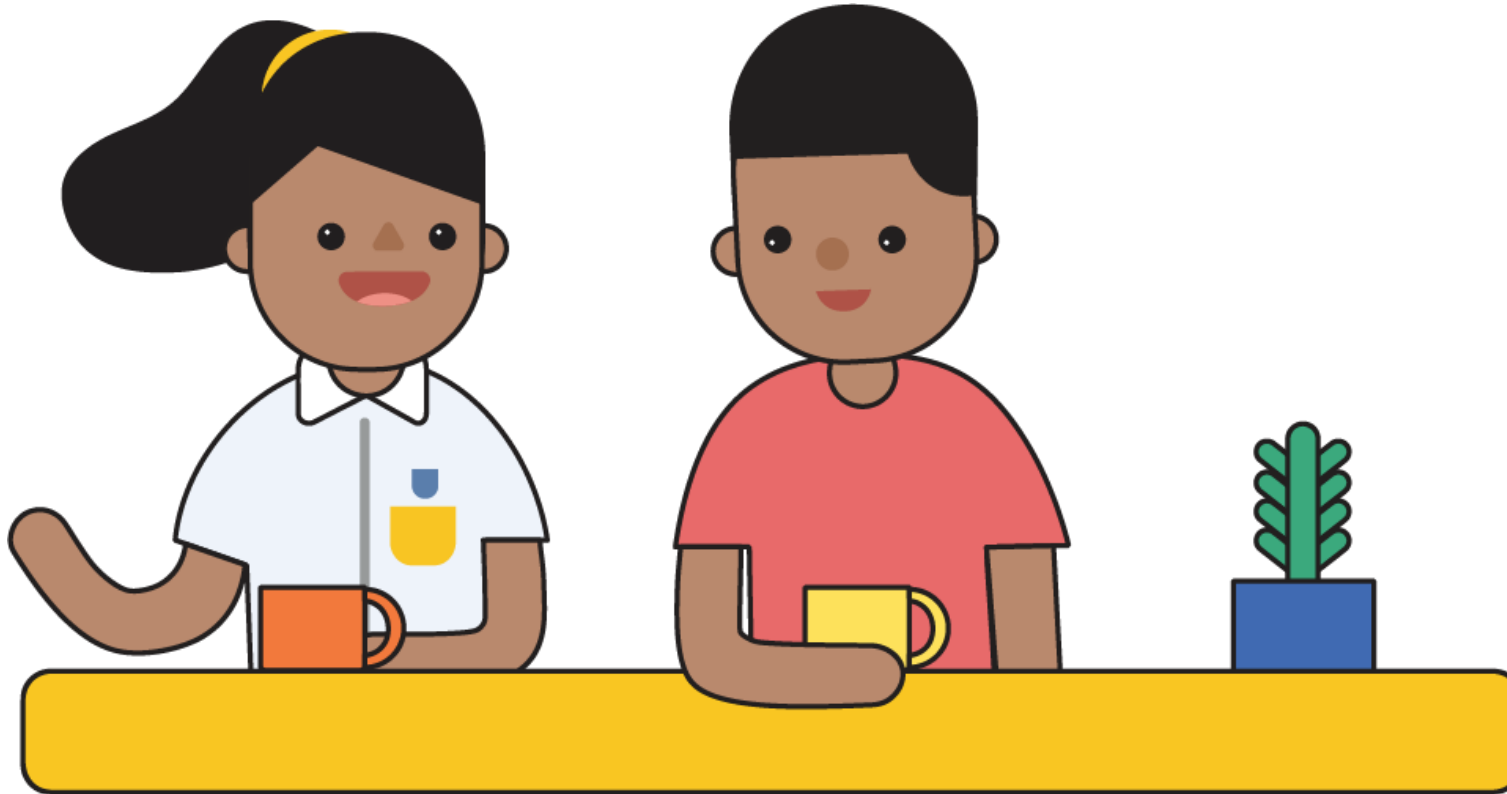
Zhangde Primary School  
2026

*Learning School* •





# Support





# FIND OUT MORE ON THE PSLE-FSBB MICROSITE



<https://go.gov.sg/pslefsbb>



Zhangde Primary School  
2026

*Learning School* ❤️





# OTHER RESOURCES

SchoolFinder  
Tool

**SCHOOL  
FINDER**



<https://go.gov.sg/secschoolfinder>



(Ready from May  
each year)

<https://www.schoolbag.edu.sg/story/open-house-for-secondary-schools/>



# OTHER RESOURCES

## ECG Tips for Parents



<https://go.gov.sg/tips-for-parents>

## MySkillsFuture Student Portal (Primary)



<https://go.gov.sg/mysfpri>

## ECG What's Next



<https://go.gov.sg/whats-next-psle>







# Thank you!

We look forward to your continued partnership this year.

